

Dean,

Here are some ideas of menu/marketing materials I like to help get us started,



- Like this wave on here it kinda represents the interior design in the salon---not a must to have in the design just a thought----MAYBE USE TWO COLORS BELOW **and create a gift card with same die cut edge?**



- Like the colors really want to use these two tones
- Also like the rounded edges (costs) or incorporate the wave ????
- Like to say with similar colors so we could use up our old envelopes and not have waste---until we use the newly designed envelopes you all come up with☺

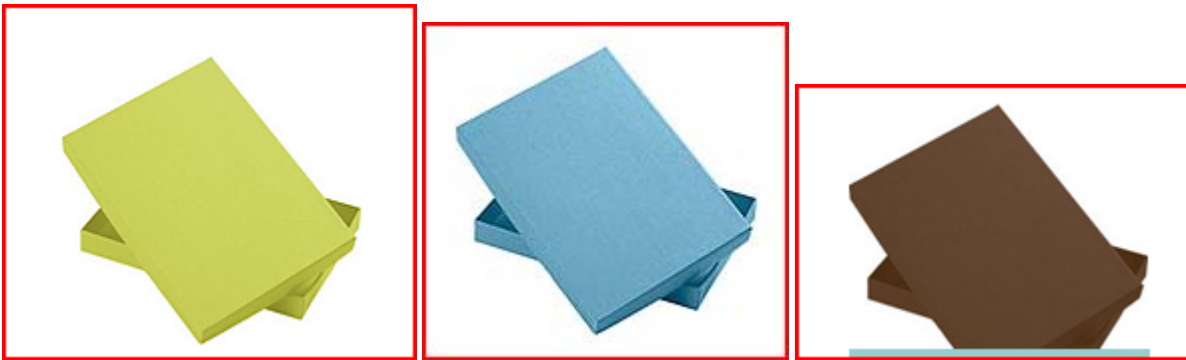


Like the LAY

OUT BUT WAY TOO DARK FOR US could use a little more color, like the simplicity, like the edge color difference, the one color section is nice---just wanted to help give you ideas of styles I like

Like the GIFT CARD INSERTS BELOW: LOVE THE COOL SCRIBBLES ON THE ONE TO THE LEFT, but needs verbiage on it like one on right... A gift to/From/COMMENT/\$





Like these three colors combinations together---I like the brownish color at the top best, NOT wanting the boxes



I like these ALSO, MAYBE USE THE "same" wave on the Gift card insert when it is folded---as the menu=====☺

Keeping in mind these will fit in a standard size envelope with the menu... it would be nice to have it all fold up and if they ONLY want gift card and NO LARGE envelope or menu this would look presentable as a standalone material...

Also, we would need a logo on front for this purpose



like the way this closes???

Like the menu colors below FOR HEADINGS like the way they used the different color to make headings stand out

See below----next page

I wish I had don't this whole layout for you guys in another program besides word. Because it is leaving so many gaps etc... sorry about that!

	Stylist	Senior	Director	Artist	Expert	Technician	Master
Blow dry							
Super sleek	£19.95	£23.95	£27.95	£33.95	£36.95	£41.95	£44.95
The wavy	£23.95	£27.95	£33.95	£36.95	£41.95	£44.95	£46.95
The classic	£25.95	£29.95	£35.95	£38.95	£43.95	£47.95	£50.95
Big & bouncy	£28.95	£32.95	£37.95	£40.95	£46.95	£49.95	£51.95
Brazilian from	£99.95	£99.95	£99.95	£99.95	£99.95	£99.95	£99.95
Cutting							
Ladies	£35.95	£41.95	£46.95	£52.95	£64.95	£69.95	£74.95
Mens	£22.95	£27.95	£33.95	£36.95	£42.95	£49.95	£52.95
Foils							
T section	£46.95	£54.95	£60.95	£67.95	£72.95	£79.95	
Half head	£65.95	£69.95	£76.95	£83.95	£88.95	£94.95	
Full head	£82.95	£85.95	£91.95	£99.95	£104.95	£119.95	
Colour							
Re touch	£35.95	£37.95	£39.95	£42.95	£47.95	£54.95	
Re touch & refresh	£40.95	£42.95	£45.95	£47.95	£52.95	£59.95	
Full head colour	£43.95	£46.95	£49.95	£52.95	£57.95	£64.95	
Semi glossing	£38.95	£40.95	£43.95	£47.95	£51.95	£54.95	
Balayage from	£39.95	£42.95	£45.95	£50.95	£55.95	£59.95	
Mens colour	£28.95	£30.95	£31.95	£33.95	£36.95	£39.95	
Correction	p.o.c	p.o.c	p.o.c	p.o.c	p.o.c	p.o.c	
Specialist							
Extensions	p.o.c						
Relaxing	p.o.c						
Perming	p.o.c						



REALLY LIKE these icon figures and \$ sign (but would need to be \$40 + etc...) and the colors actually the whole layout---would be cool for marketing, just wanted to send incase you can use it too???

NOTE: The 3 designs in our logo are a leaf, flower, wave you will see this on our wesite too on the front page, would like to keep with same continuity (sp?)